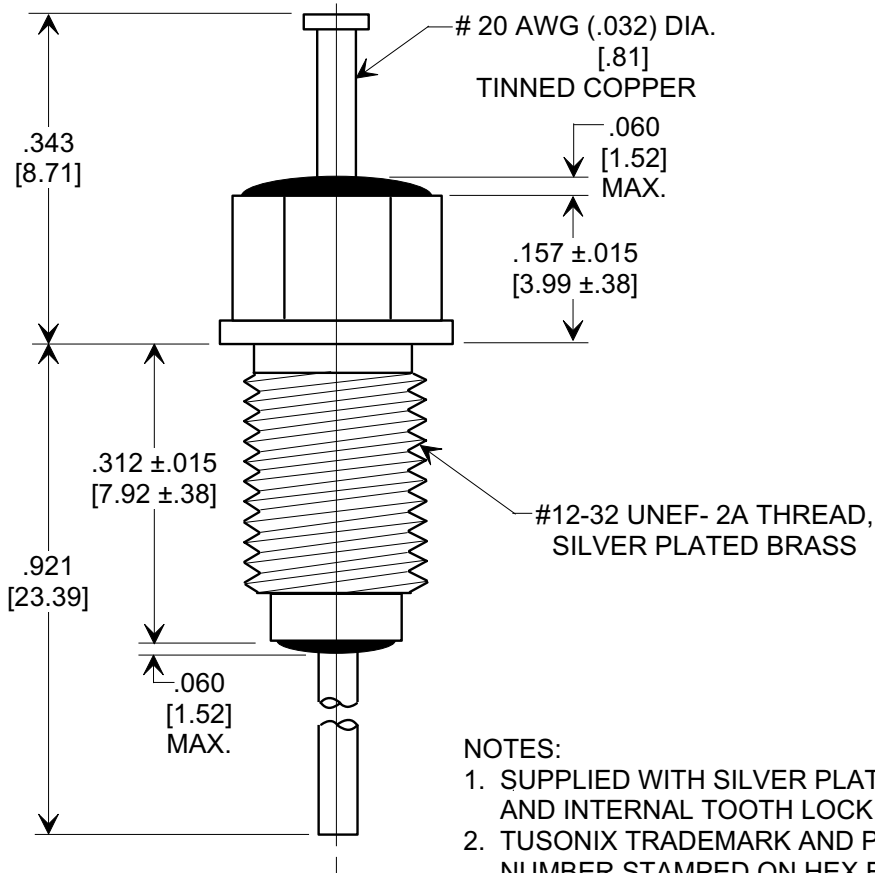
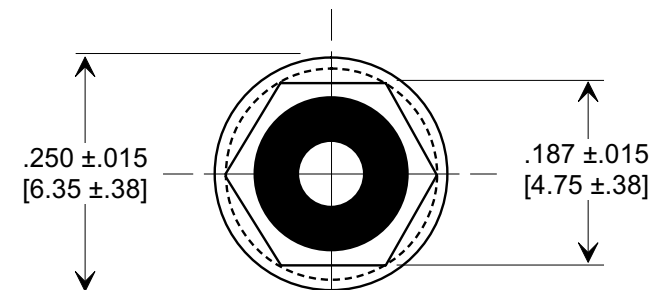
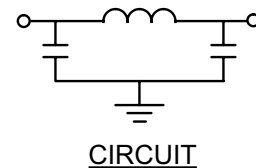
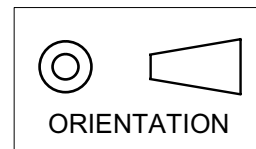


Electrical Testing  
per Tusonix standard  
test plans and Mil-Std-202  
Test Methods.

**MARKETING SALES DRAWING**  
**DIMENSIONS IN INCHES - DO NOT SCALE THIS DRAWING**



- NOTES:  
1. SUPPLIED WITH SILVER PLATED HEX NUT AND INTERNAL TOOTH LOCK WASHER.  
2. TUSONIX TRADEMARK AND PART VARIATION NUMBER STAMPED ON HEX FLATS.

MIN. CAP.	125° WORKING VOLTAGE	CURRENT I.D.C.	MINIMUM NO LOAD INSERTION LOSS (dB) AT 25°C PER MIL-STD-220							
			100 KHz	1 MHz	3 MHz	10 MHz	30 MHz	100 MHz	300 MHz	1 GHz
100,000 pF	100 VDC	10 A	5	18	40	65	70	70	70	70

X-2015 Rev-0

<b>REVISION RECORD</b> Original Release C.O. <b>930316-1</b> REDN TO COMP FMT, ADDED NOTES & REVOKED MARKING. S.M. 09-24-98 <b>19980923-1-01</b> ADDED DIMS. .060 MAX. S.M. 07-17-01 <b>20010713-2-04</b>	--TOLERANCES-- Unless Otherwise Specified		Title	
	DECIMAL ± .031		<b>MULTILAYER BUSHING STYLE EMI FILTER</b> Drawn S.M. 09-24-98 Scale 5 X Approved J.Mc. 09-24-98	
	ANGLES ±			
	<b>TUSONIX</b> TUCSON, ARIZONA		<b>A</b> <b>4253-003</b>	